

## ***How to activate PCX1000 Add-On Modules, Advanced and Professional versions***

PCX1000 v.7.1 and upwards comes in three different versions:

- 1) PCX1000 Light
- 2) PCX1000 Advanced
- 3) PCX1000 Professional

All versions of PCX1000 also have optional activation for:

- A) Inventory Module
- B) Accounting Interface
- C) Accounts Receivable.



### **Notice:**

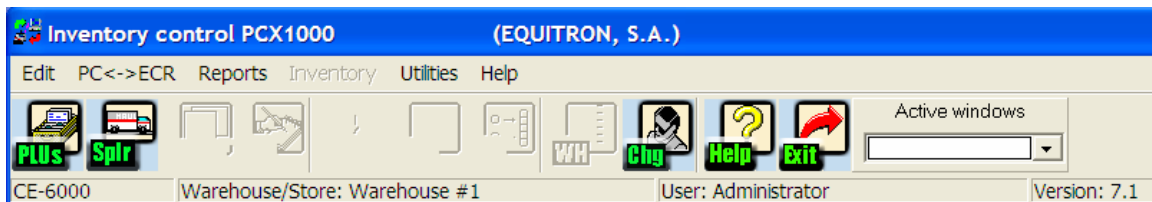
**In order to activate and upgrade your current PCX1000-Light version, to Advanced or Professional, or to activate any optional module, you will need to contact the dealer or distributor who sold you this software, and purchase a separate activation code.**

### ***PCX1000-Light***

When you first install PCX1000, the default version that will be enabled is the *PCX1000-Light* version. It will be limited to:

- Only one Warehouse/Store creation
- ECR's can be selected from the small and mid sized machines only.  
(going from CE/TK6000 all the way to TE-3000/4500)
- The inventory module and all related inventory features will be disabled since this is an optional feature.

The main Menu Bar will show several buttons grayed out:



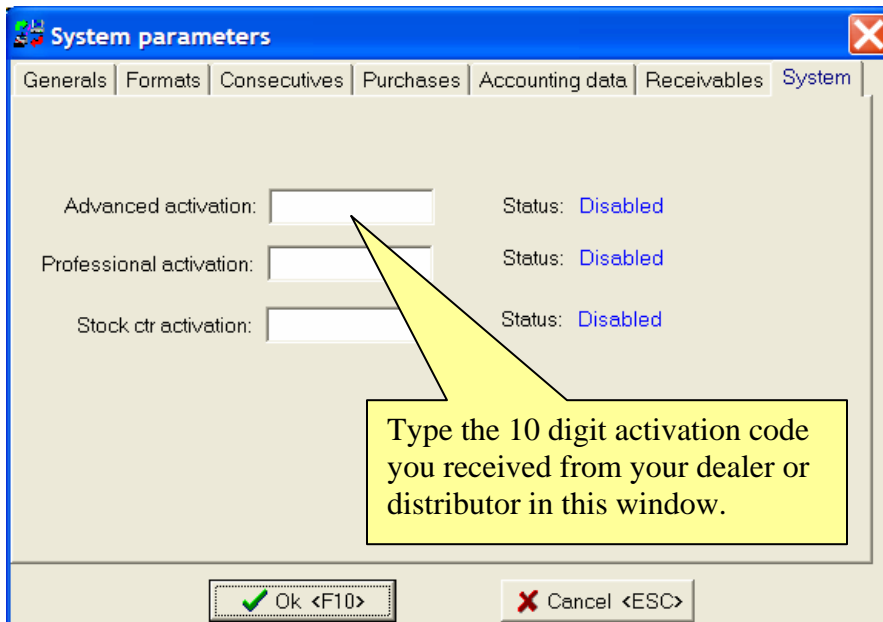
You will not have access to:

- Purchase Orders
- Invoice

- Incoming Merchandise
- Transfer PLU's
- Inventory Adjustment

### **PCX1000-Advanced**

Once you have obtained your activation code for the **Advanced** version, you need to input the 10 digit code in the System Parameters window. Go to the Utilities Menu, select System Parameters and click on the SYSTEM tab.



It will be limited to:

- Only one Warehouse/Store creation
- ECR's can be selected from the small and mid sized machines all the way to the high end machines, including TE-7000/8500.

The inventory module and all related inventory features will be disabled since this is an optional feature.



**Notice: If you purchased the inventory module for PCX1000-Light, the module will disable if you do not purchase the inventory module for the advanced level.**

If you don't activate the inventory module you will not have access to:

- Purchase Orders
- Invoice
- Incoming Merchandise
- Transfer PLU's
- Inventory Adjustment

## PCX100-Professional

Once you have obtained your activation code for the **Professional** version, you need to input the 10 digit code in the System Parameters window. Go to the Utilities Menu, select System Parameters and click on the SYSTEM tab.



The screenshot shows a window titled "System parameters" with several tabs: "Generals", "Formats", "Consecutives", "Purchases", "Accounting data", "Receivables", and "System". The "System" tab is selected. There are three rows of activation settings:

- Advanced activation:  Status: Disabled
- Professional activation:  Status: Disabled
- Stock ctr activation:  Status: Disabled

A yellow callout box points to the Professional activation field with the text: "Type the 10 digit activation code you received from your dealer or distributor in this window." At the bottom of the window are "Ok <F10>" and "Cancel <ESC>" buttons.

You will have access to:

- Multiple and Unlimited Warehouses/Stores
- ECR's can be selected from the complete range, small mid sized and high end machines, including QT6000.
- The inventory module and all related inventory features will be disabled since this is an optional feature.



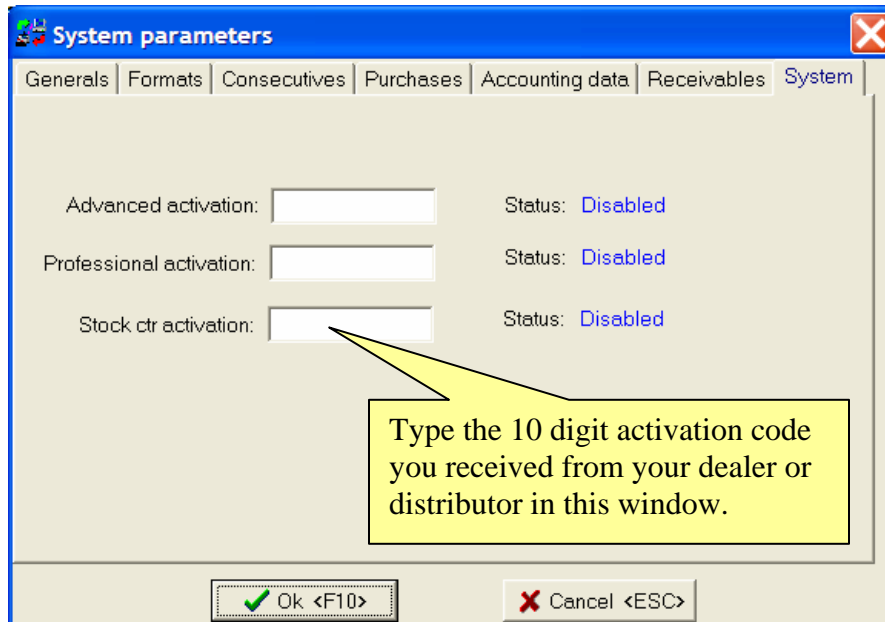
**Notice: If you purchased the inventory module for PCX1000-Advanced, the module will disable if you do not purchase the inventory module for the professional level.**

If you don't activate the inventory module you will not have access to:

- Purchase Orders
- Invoice
- Incoming Merchandise
- Transfer PLU's
- Inventory Adjustment

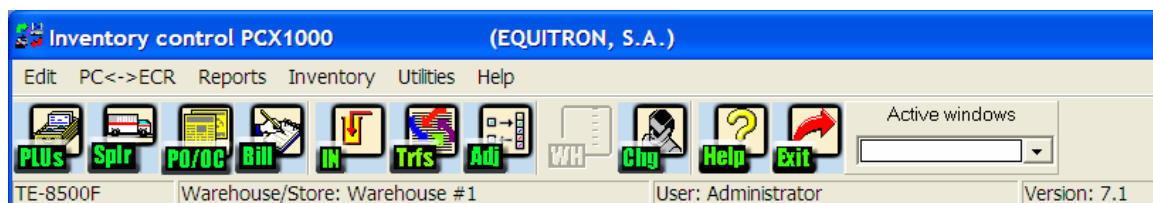
## Inventory Module (Optional)

Once you have obtained your activation code for the **Inventory** module, you need to input the 10 digit code in the System Parameters window. Go to the Utilities Menu, select System Parameters and click on the SYSTEM tab.



To confirm the activation, press OK or <F10>.

Once the Inventory/Stock Control Module has been activated, you will notice the main menu bar buttons and options will be enabled:



You will have access to:

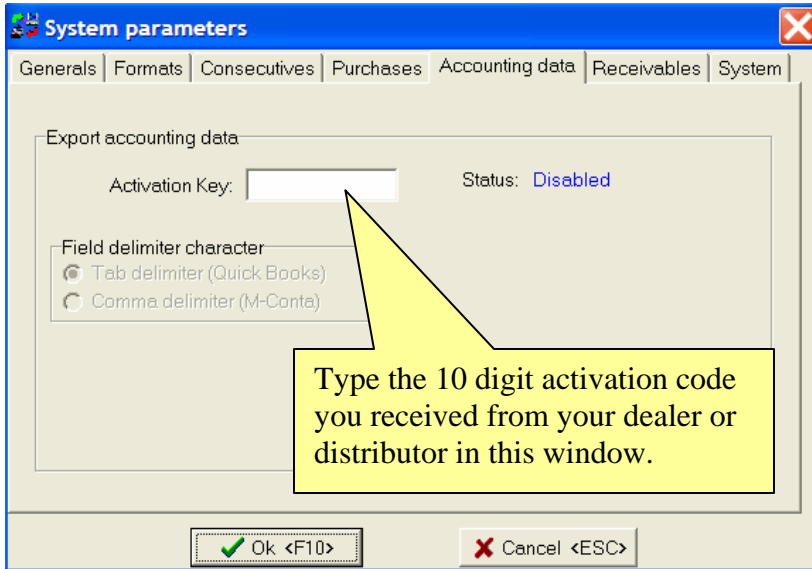
- Purchase Orders
- Invoice
- Incoming Merchandise
- Transfer PLU's
- Inventory Adjustment



**Notice: The inventory module is linked to the Light, Advanced and Professional levels. You need to upgrade this module for each level to continue using it.**

### **Accounting Interface (Optional)**

To activate this interface, you need to input the 10 digit code in the System Parameters window. Go to the Utilities Menu, select System Parameters and click on the ACCPUNTING DATA tab.



### **Accounts Receivable (Optional)**

To activate this interface, you need to input the 10 digit code in the System Parameters window. Go to the Utilities Menu, select System Parameters and click on the RECEIVABLES tab.

