

**NEW Features:**

- ✓ **QT-6000 Interface**
- ✓ **TE-2200/2400 Interface**
- ✓ **ECR-Setup “Guide” included in Warehouse/Store window**
- ✓ **Easy-To-Pick Archive Report**
- ✓ **New & Faster Database Server**
- ✓ **Purchase Order Utility for Handheld Scanner**
- ✓ **CF-Card Binary File Import/Export Utility**



Features and Utilities								
CASIO ECR Model	Time and Attendance	Keyboard PLU and Layout Assignment	ECR-Poll Utility (*)	Electronic Journal	Hourly Sales Report	Hourly Item Sales Report	CF-Card Polling	CF-Card Import/Export
TE-2200 <b>NEW</b>	X		X		X		X	
TE-2400	X		X		X		X	
TE-3000	X		X	X	X	X	X	
TE-4500	X	X	X	X	X	X	X	X
TE-7000	X		X	X	X	X	X	
TE-8500	X	X	X	X	X	X	X	
CE/TK/7000/7500		X	X		X	X		
CE/TK/6000/6500*			X		X	X		
CE/6000/6500		X	X		X	X		
TK-T500		X	X		X			
SPB v.2 / MPS			X		X			
QT-2000 / 2100	X	X	X	X	X	X	X	
QT-6000 <b>NEW</b>	X		X	X	X	X	X	X

All of the following features are standard for the CASIO ECR family: •PLU's • Departments • Sub-Department • Groups (if installed with SPB, SPB-II or MPS) • Cashiers • Financial Reports // \* Scan Code IPL version only // \*\* TE-2000 is only available in version 6.5

Now available in the latest release of PCX1000 version 7.1, you will find a whole new way to configure your back office needs.

With a modular pricing structure, you can opt for the store management solution that fits your budget. PCX1000 is now available in three versions **LIGHT**, **ADVANCED** and **PROFESSIONAL**, allowing you to gradually upgrade or include modules when needed.

In version 7.1 you will also find the latest new models from CASIO (**TE-2200/2400**), which expand your range of possibilities from a small liquor or grocery store to the highest demanding hospitality systems with the QT-6000 series. No matter what the task, you will have the tool that solves the needs.

Our powerful and flexible Back Office and Inventory Control Software, with more than 10 years experience now became even more flexible!

### ***New modular license & pricing***

Giving way to a whole new concept, we now improve your productivity with a simple yet powerful feature rich software. Increase your efficiency of store management by upgrading on a step-by-step basis.

Delivering the most powerful back office, inventory and reporting utility you can get on the market today, it is now available at even lower prices than before.

Why? Because we have arranged a setup that can be adapted to the type of ECR solution you need.

#### **PCX1000-LIGHT**

Includes only the low and mid range ECR's : select from CE/TK6000, TE-2200/2400, TE-3000/4500.

You will be able to setup only one warehouse or store, and the inventory module will be an optional feature.

#### **PCX1000-ADVANCED**

Includes the low, mid and high range ECR's all the way up to TE-7000/8500.

You will be able to setup five warehouses or stores, and the inventory module will also be an optional feature. Included in the Advanced series is also the option to use the Scheduler or Unattended Polling utility.

#### **PCX1000-PROFESSIONAL**

Giving the total power of multiple ECR and Multiple Warehouse management, you can select from the complete array of ECR's currently available from CASIO. All the way up to the new "touch sensation" QT-6000. An initial five Warehouses are included, and you can add additional warehouses by 10, 15, 20, 50 or 100.

The inventory module is an optional feature that can be added at a later time if needed, just as in the Light and Advanced versions.

Included in the Professional series is also the option to use the Scheduler or Unattended Polling utility.



## ***CUSTOMER / Accounts receivable tracking***

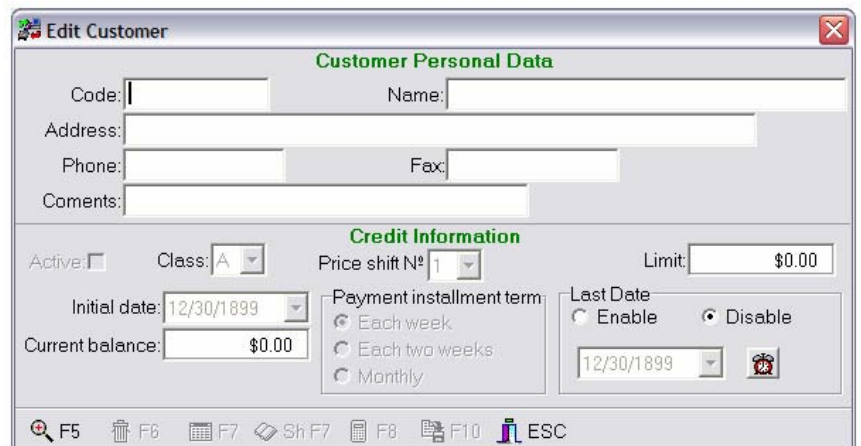
Previously available as an external module, the new Customer Control and Accounts Receivable is now integrated in PCX1000 v.7.1.

Designed originally to work only with MPS and Super Board fitted ECR's, you can now take advantage and use this optional module through the included Billing features in PCX1000.

When used together with MPS or SPB, you can easily synchronize data with your PC via PCX1000's intelligent system synchronization. Movements recorded at ECR and PC will not interfere with each other, helping keep your customer's balance up to date in seconds without errors or confusion.

All editable fields are also synchronized with your ECR.

You can print out customer activity reports, account history movements, customer balances, or credit information. Assign specific categories to your customer (A, B, C, etc) helping you group customer in various reports.



The screenshot shows a software window titled "Edit Customer" with a close button in the top right corner. The window is divided into two main sections: "Customer Personal Data" and "Credit Information".

**Customer Personal Data:** This section contains several input fields: "Code:" (empty), "Name:" (empty), "Address:" (empty), "Phone:" (empty), "Fax:" (empty), and "Comments:" (empty).

**Credit Information:** This section contains several controls: "Active:" with a checked checkbox, "Class:" with a dropdown menu showing "A", "Price shift N°:" with a dropdown menu showing "1", and "Limit:" with a text box containing "\$0.00". Below these are "Initial date:" with a dropdown menu showing "12/30/1899" and "Current balance:" with a text box containing "\$0.00". The "Payment installment term:" section has three radio buttons: "Each week" (selected), "Each two weeks", and "Monthly". The "Last Date:" section has two radio buttons: "Enable" (selected) and "Disable", and a dropdown menu showing "12/30/1899" with a small icon to its right.

At the bottom of the window, there is a toolbar with icons for search (F5), delete (F6), print (F7), share (Sh F7), refresh (F8), and help (F10), along with an "ESC" key icon.

Setup a price shift per customer and printout a list to easily to keep track of all information. Use with one ECR or multiple machines connected In-Line.

Reports can be easily seen on screen or printed at a moments notice. Movement reports are also available, allowing you to categorize by code, date or daily journal.

Export the data for your accounting or book keeping department by means of Tab delimited or CSV type reports.

## ***OTHER NEW FEATURES***

**Merchandise Requisition:** Should you need any product currently available in your stock, it is possible to track and control consumed in-house inventory through this module.

**PLU Assembly:** Create in-house stock of assembled PLUs, from raw materials to final goods.

**Replace Code:** Whenever a code needs to be changed, it is possible to transfer all information (including historical data) to the new code you want to assign.

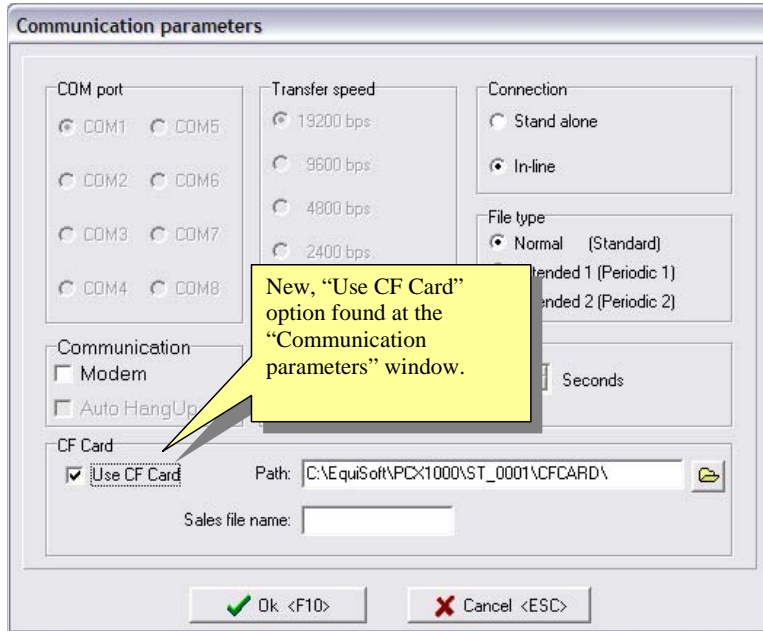
**Inflation Adjustment:** Easy way to adjust all inventory costs up or down when needed.

**Accounts Receivable / Accounting Interface:** With the new Customer / Accounts Receivable module, you can also export receivables accounting data to QuickBooks or any other accounting software, accepting CSV data imports.

## CF-Card Import / Export Binary File Utility

**Note: The following option will be available only for a QT-6000 and TE-4500F ECR's at this time. In future releases other ECR models will also support this utility.**

The binary files you can send to and from the ECR include: PLU, Tax, Bottle Link Table, Departments, Sub-departments, Groups, Cashier and Time & Attendance. To use this utility, go to the communication parameters window, and set the "Use CF card" at the communication parameters:



Two things to note here, the path where the binary programming files will be placed by PCX1000, and the name of the file coming from the ECR, to collect the sales information.

This name is usually set when producing the ECR backup (090) upon recording it to the CF card by the ECR. This can be automated by an arrangement programming at the ECR.

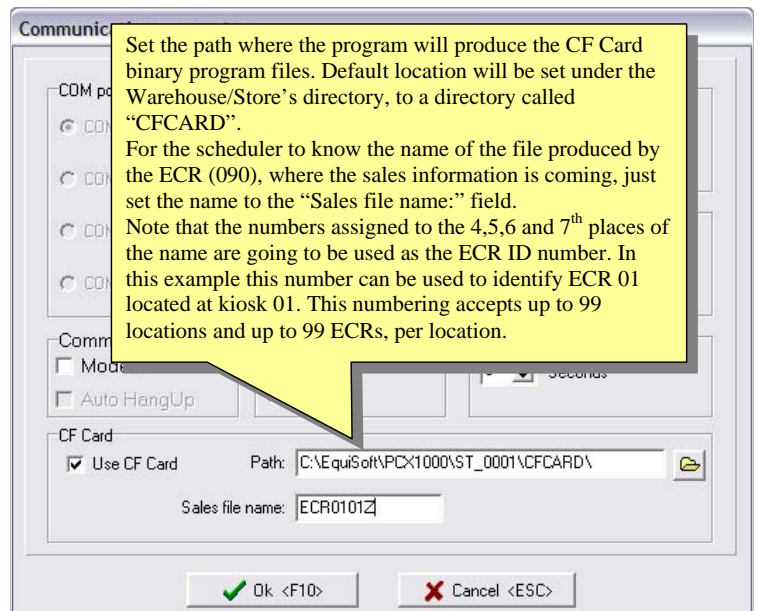
The Scheduler will use this file name, and the user should place the file to the above directory. (Example: copy it from the CF Card drive to

C:\EquiSoft\PCX1000\ST\_0001\CFCARD\ directory).

To manually collect the sales information from the CF Card 090 file, you can select the "PC-ECR", "CF card file selection" option in PCX1000's menu.

To find out more about this feature, please visit the Main Features page on our web.

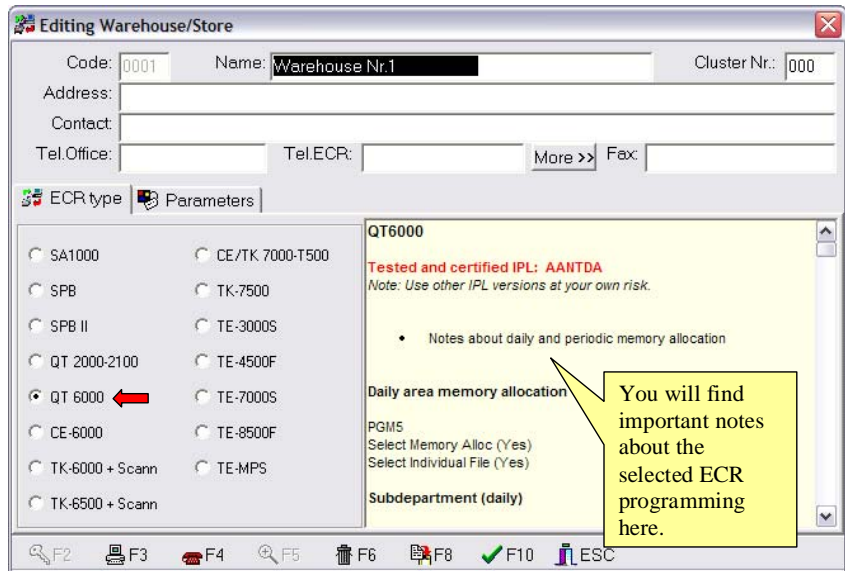
[www.equitron.com/PCX1000/features.htm](http://www.equitron.com/PCX1000/features.htm)



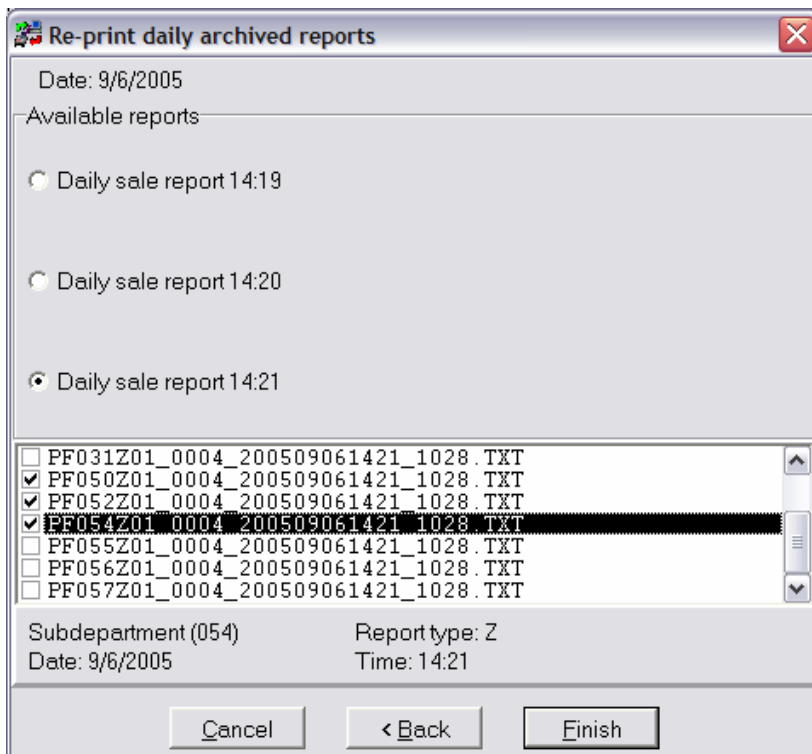
## Notes and ECR-Setup window

In the new notes window you will find particular program settings for the ECR. Each ECR model will display their related particular notes.

No need to seek about this information anymore, it will be there and we will keep it updated for each release version of the program.

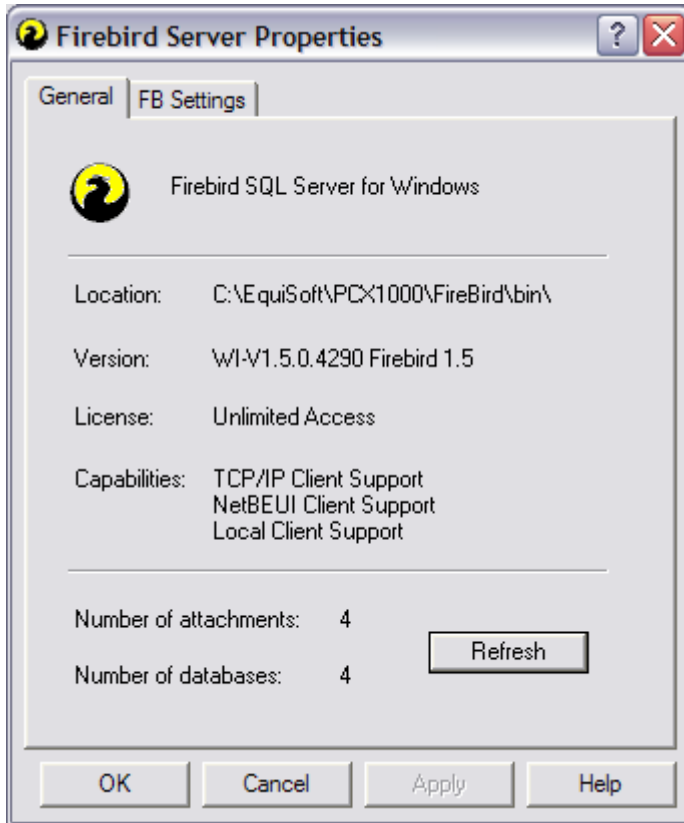


## Easy-to-Pick Archived Reports



New easy-to-pick daily archived reports. Now it is possible to select from a sales batch info, the individual report(s) that you wish to re-print.

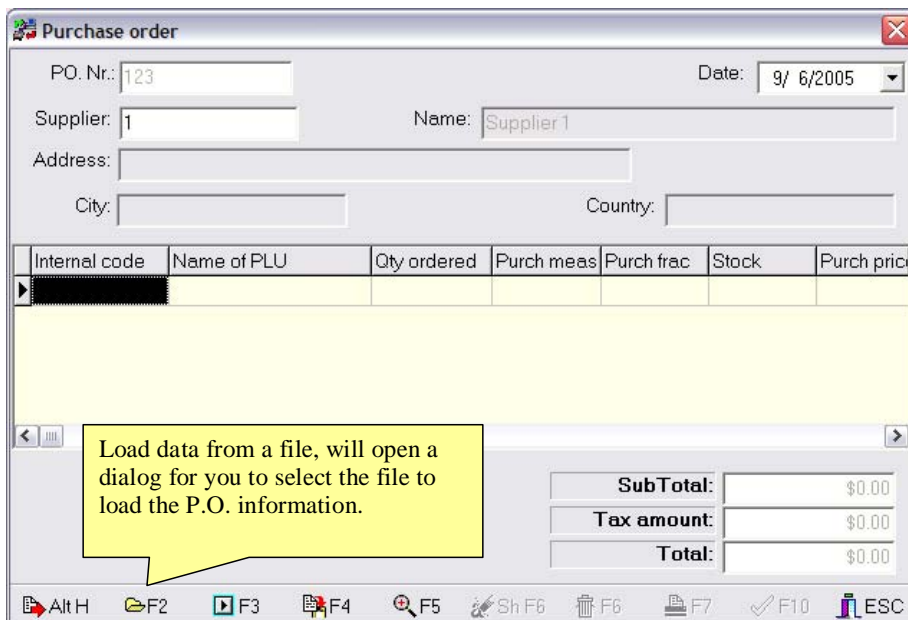
## New FireBird Database Server



1. Reliable and robust engine.
2. Fast: in extensive reports, our benchmark testing showed major improvement, turning the wait time from hours into minutes. More than 2000% speed gain against the old Apollo Database Server.
3. Powerful: the database size is no longer a concern, it could be a couple of thousand records or millions of them, FireBird is designed to handle the load quickly and efficiently.

## New Purchase Order Utility for Handheld Scanner Devices

New, purchase order generation from an external file. This allows the use of a handheld scanner (or scan-pal) to produce a purchase order and load it to the inventory afterwards.



Load from (F2), will open a window where you can select the file from which to produce the new purchase order document.